

# EMULTEK 15

## HIGH CAPACITY EMULSION PLANT

The EmulTEK 15 is the perfect solution for big projects. The bitumen emulsion plant offers top flexibility with different mix designs and recipes. Its compact dimensions make the EmulTEK 15 easy to transport to different job-sites.

### USAGE OF EMULSIFIED BITUMEN

- Tack coat between binder and wearing courses
- Prime coat
- Surface dressing
- Slurry seal
- Micro surfacing

### HIGHLIGHTS

- Up to 15 t/h capacity
- Fully automated control and reporting system by SCADA based software over PLC
- Flexibility for different mix designs and recipes
- Hot water inlet
- Automatic cleaning system
- Remote customer service via internet
- Easily transportable, suitable for container



## TECHNICAL DATA EMULTEK 15

SEMI-AUTO OR AUTOMATIC OPERATION POSSIBILITIES

COLLOIDAL MILL

STAINLESS STEEL PREMIX TANKS ON LOAD CELLS

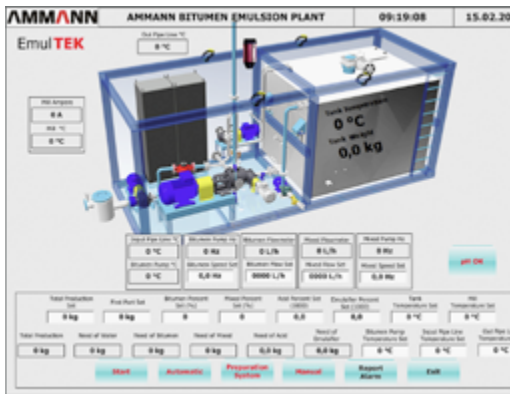
HEATING LINES FOR RAPID HEATING OF WATER

STAINLESS STEEL PUMP AND FLOW METER

BITUMEN FLOW METER WITH HEATED BODY

BARREL PUMP FOR ADDITIONAL SAFETY

TOUCH SCREEN MONITOR



## OPTIONS

ELECTRICAL OR THERMAL OIL HEATING

ADDITIONAL KEROSENE / DIESEL FEEDING LINE

SEPARATE CONTROL CABIN

ADDITIONAL ADDITIVE LINES

IN LINE PRODUCTION

AUTOMATIC PH MEASURING

