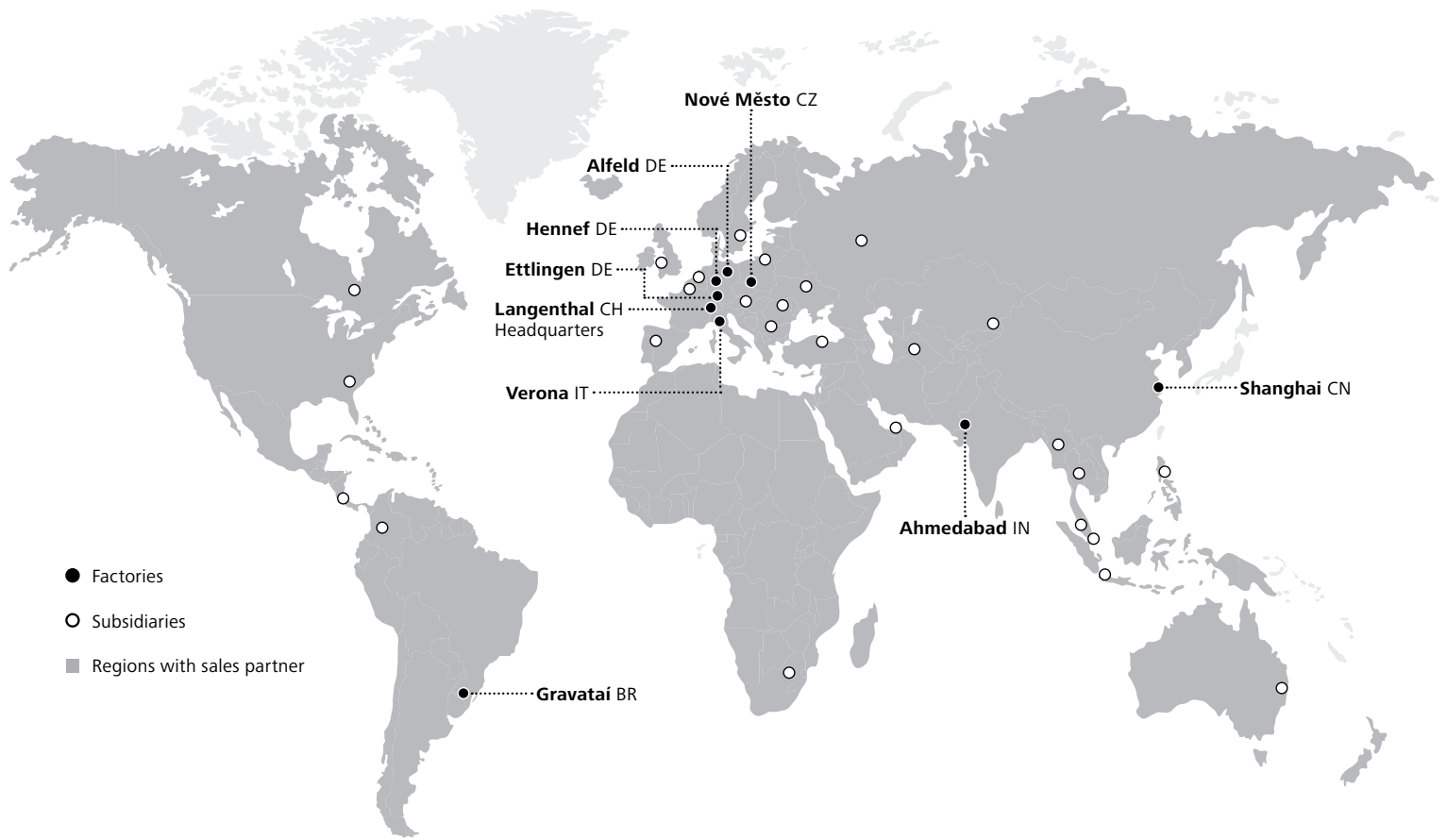




Plants

## Complimentary products for the asphalt production

Bitumen processing-, storage- and heating systems



- Factories
- Subsidiaries
- Regions with sales partner

## Ammann Group Worldwide

Nine own production locations and over 100 agencies and sales partners

### An innovative family firm

Ammann is a world-leading supplier of mixing plants, machines and services to the construction industry with core expertise in road building and transportation infrastructure. Our strengths are the forthcoming approach of a family firm that has been operating for many years, coupled with our strong and well-established international presence. Ever since 1869 we have been setting benchmarks in the road-building industry, thanks to countless innovations and solutions which are as competitive as they are dependable.

True to our motto "Productivity Partnership for a Lifetime" we gear our activities totally to the needs and requirements of our clients across the globe. We are aware that plants and machines which prove their merits day after day under tough operating conditions are the only way to give our clients the critical competitive edge that they need. As you would expect, we provide a well-developed service network and reliable supplies of spare parts, together with support throughout the entire lifetimes of the plants and machines that we offer.

### Ammann: One brand – grown over years



### Intelligent compaction





**Rammers**



**Vibratory plates**



**Rollers**



**Road pavers**

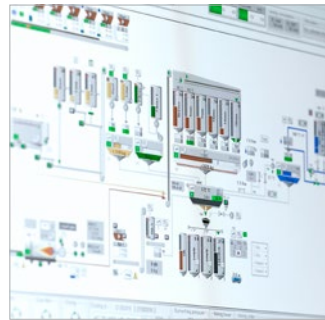
Ammann manufactures mixing plants, compactors and pavers at nine of its own production locations. Over 100 agencies and sales partners work directly for our customers throughout the world. Expert round-the-clock service and a high-quality spare parts service are guaranteed.



**Asphalt mixing plants**



**Concrete mixing plants**



**Control systems**



**Customer Service**

## Asphalt mixing plants

Ammann is the only manufacturer of asphalt mixing plants to develop and produce all the system components (including controls, screens, dryers, burners, mixers and filters) in-house on the basis of an integrated concept. This enables us to offer our customers an optimised complete solution, with all elements of the plant ideally coordinated – from process analysis and design of the system components through to controls for all components of the plant. Well over 4000 Ammann asphalt mixing plants are in operation every day under tough conditions – a figure that speaks for itself.

## Compaction

A complete line of state of the art Ammann compaction products is manufactured at two dedicated production sites. From 62 kg Rammers up to 25000kg Vibrating Rollers, from Attachment Compactors to Intelligent Compaction Systems – with experts for all compaction applications Ammann ensures maximal customers benefit. The global network of distribution companies and distribution partners ensures the utmost support of our customers – everywhere, at any time.

## Concrete mixing plants

Ammann Elba holds a leading position as a manufacturer of both modern concrete compulsory mixers and complete mixing plants offering reliable and economic plant solutions for the production of high quality concrete. Ammann Elba offers a wide range of mixing plants covering all major sizes in mobile and stationary applications. Planetary counter-current mixers, modules for the production of precast concrete and linear storage bins complement the product range.

## Road pavers

Our Paver family consists of seven base machine types. Within a weight range of 1 to 15 t, these pavers offer paving widths from below 1 metre up to 6,5 metres. You will find the right paver to meet even the most demanding job requirements from footpaths, cycle tracks and rural roads over to parking lots, municipal, urban and main roads as well as resurfacing work.

# Moditec

## High capacity polymer modified bitumen plant

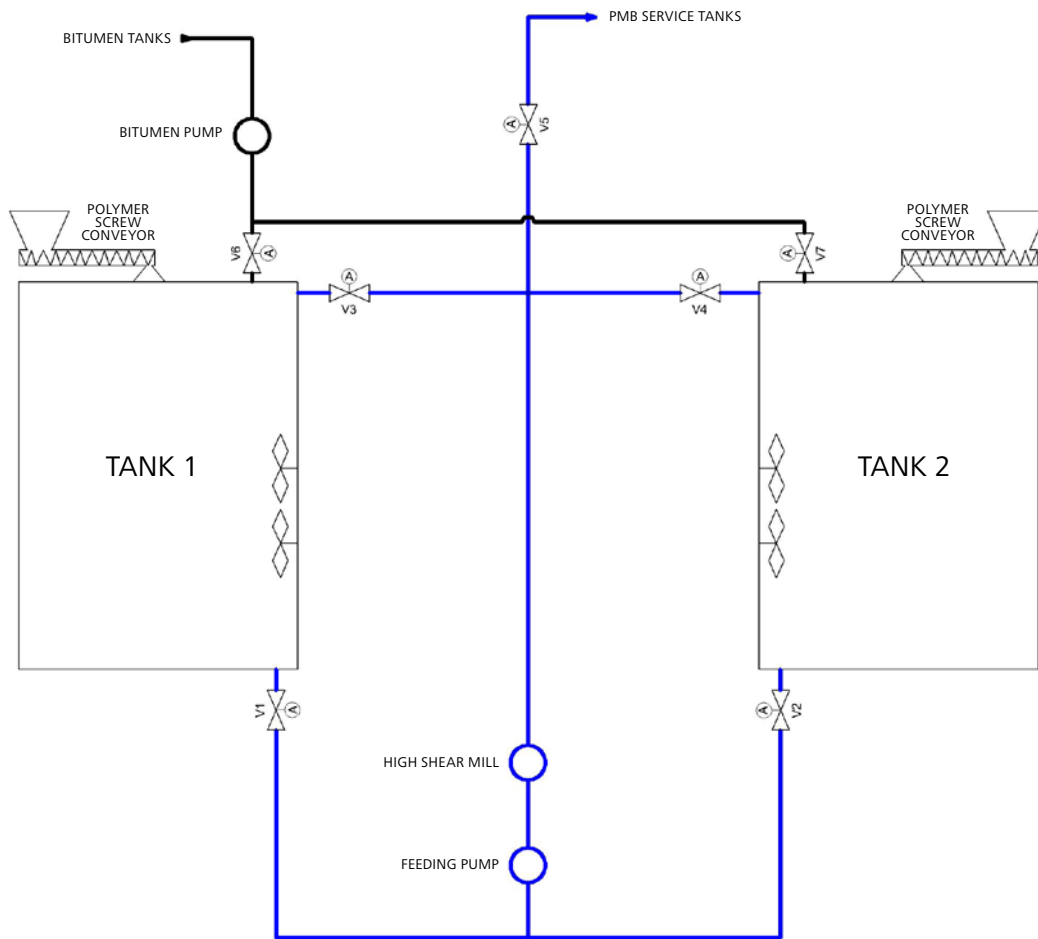
The Moditec is a fully automatic, easily transportable polymer modified bitumen plant. With a capacity up to 30 t/h, the Moditec is the perfect match for all markets. The plant offers full flexibility with different mix designs and recipes.

### Benefits at a glance

- Up to 30 t/h capacity
- High shear mill with gap adjustment
- Fully automated controls and reporting by SCADA based software over PLC
- Remote customer service via Internet
- Flexibility for different mix designs and recipes
- Easily transportable, container size
- Polymer feeding with screw conveyor or silo

"For contractors of highways, bridges, airports, viaducts and dense traffic roads."



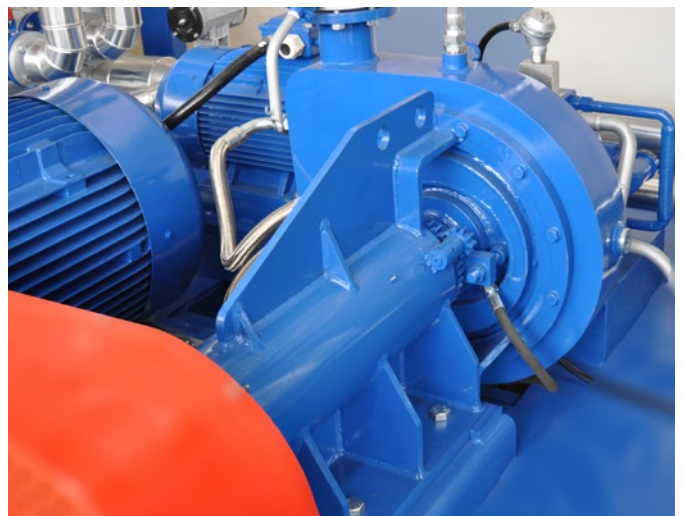


Polymer Modified Bitumen; is used wherever extra performance and durability are desired

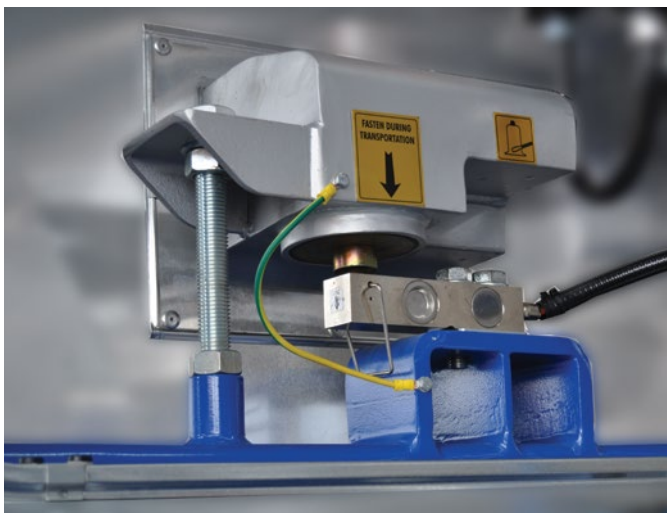
- Provides high skid resistance
- Reduces noise levels
- Improves performance under heavy traffic conditions
- Delays cracking and reflective cracking
- Increases fatigue life
- Durable in extreme climatic conditions and high rainfall regions
- Rutting resistance
- Prevents from thermal cracking and stripping
- Resistance to high climate changes
- Optimizes maintenance costs



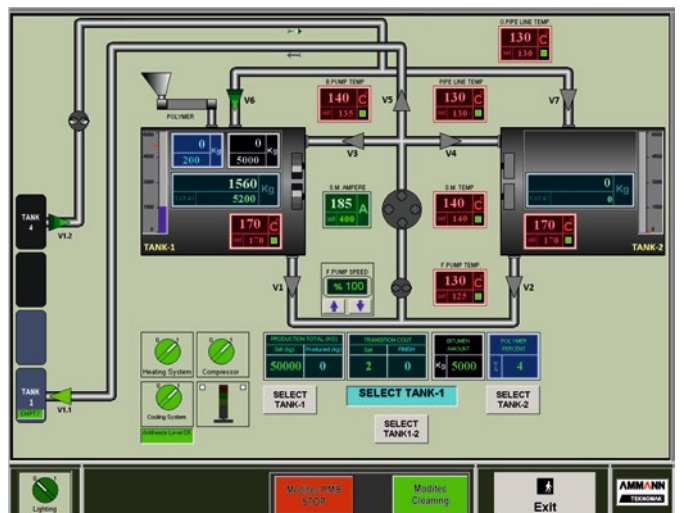
Pneumatic system.



High shear mill.



Loadcell system.



Moditec screen.

Technical data Moditec	Options
High shear mill – 1500 rpm. Soft starter controlled	Electrical or thermal oil heating
Heated tanks on load cell weighing systems	Screw conveyors on load cells
Graphite based soft seals for mill with water cooling system	10 m <sup>3</sup> big bag polymer silo with screw conveyors on load cells
Inverter controlled mill feeding pump with 50 m <sup>3</sup> /h capacity	Separate control cabin
Pneumatic valves in all piping	as1 computer integration
7 m <sup>3</sup> batch tank capacity with 60mm rock-wool insulation, heating lines and dual agitators	
Touch screen monitor for full automatic operation	
Statistical data reporting and archiving	



# Emultec 15

Fully automatic emulsion plant for high volume

The Emultec 15 is the perfect solution for big projects. The bitumen emulsion plant offers top flexibility with different mix designs and recipes. Its compact dimensions make the Emultec 15 easy to transport to different job-sites.

## Usage of emulsified bitumen

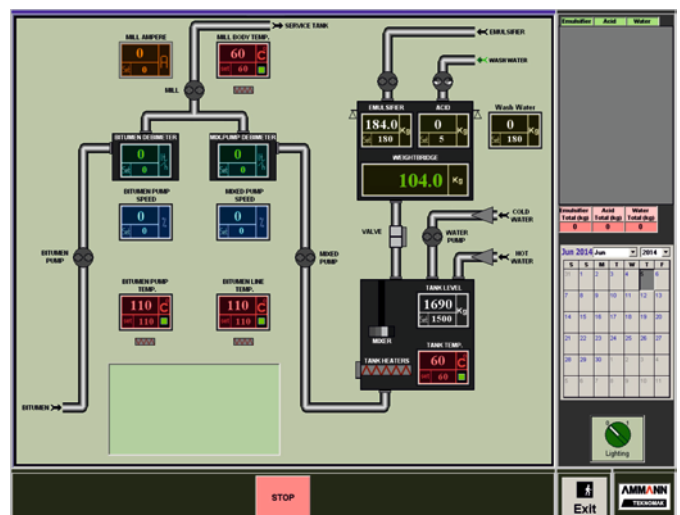
- Tack coat between binder and wearing courses
- Prime coat
- Surface dressing
- Slurry seal
- Micro surfacing

### Benefits at a glance

- Up to 15 t/h capacity
- Fully automated control and reporting system by SCADA based software over PLC
- Flexibility for different mix designs and recipes
- Hot water inlet
- Automatic cleaning system
- Remote customer service via internet
- Easily transportable, suitable for container

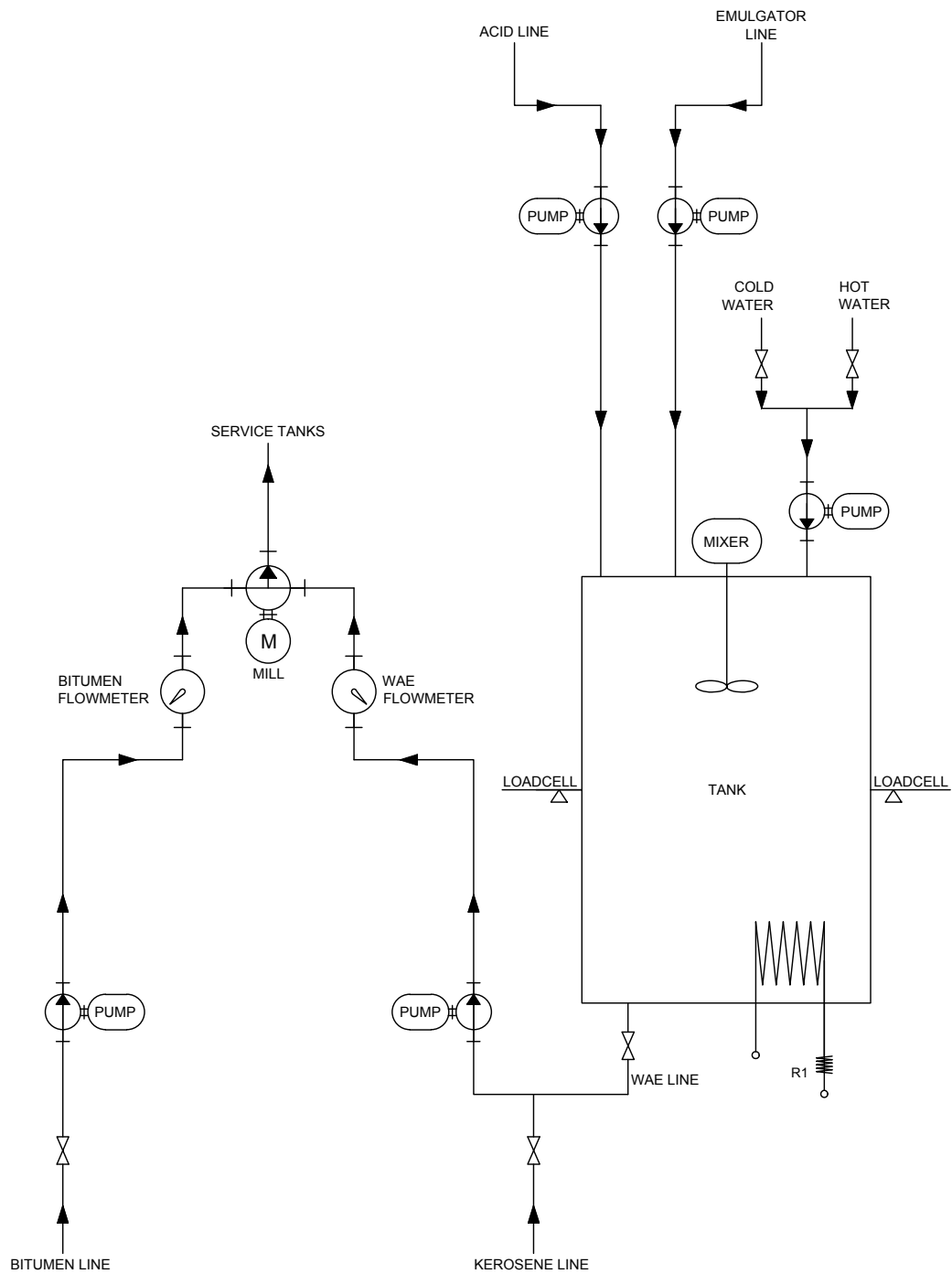


Emultec 15.



Emultec 15 screen.





Technical data Emultec 15	Options
Semi-auto or automatic operation possibilities	Electrical or thermal oil heating
Colloidal mill	Additional kerosene / diesel feeding line
Stainless steel premix tanks on load cells	Separate control cabin
Heating lines for rapid heating of water	
Stainless steel pump and flow meter	
Bitumen flow meter with heated body	
Barrel pump for additional safety	
Touch screen monitor	

# Emultec 4

Flexible emulsion production at every job-site

With its compact design and simple process, Emultec 4 is the perfect solution for different job-sites. The system is easy to transport and offers many solutions to the different emulsion needs.

## Usage of emulsified bitumen

- Tack coat between binder and wearing courses
- Prime coat
- Surface dressing
- Slurry seal
- Micro surfacing

### Benefits at a glance

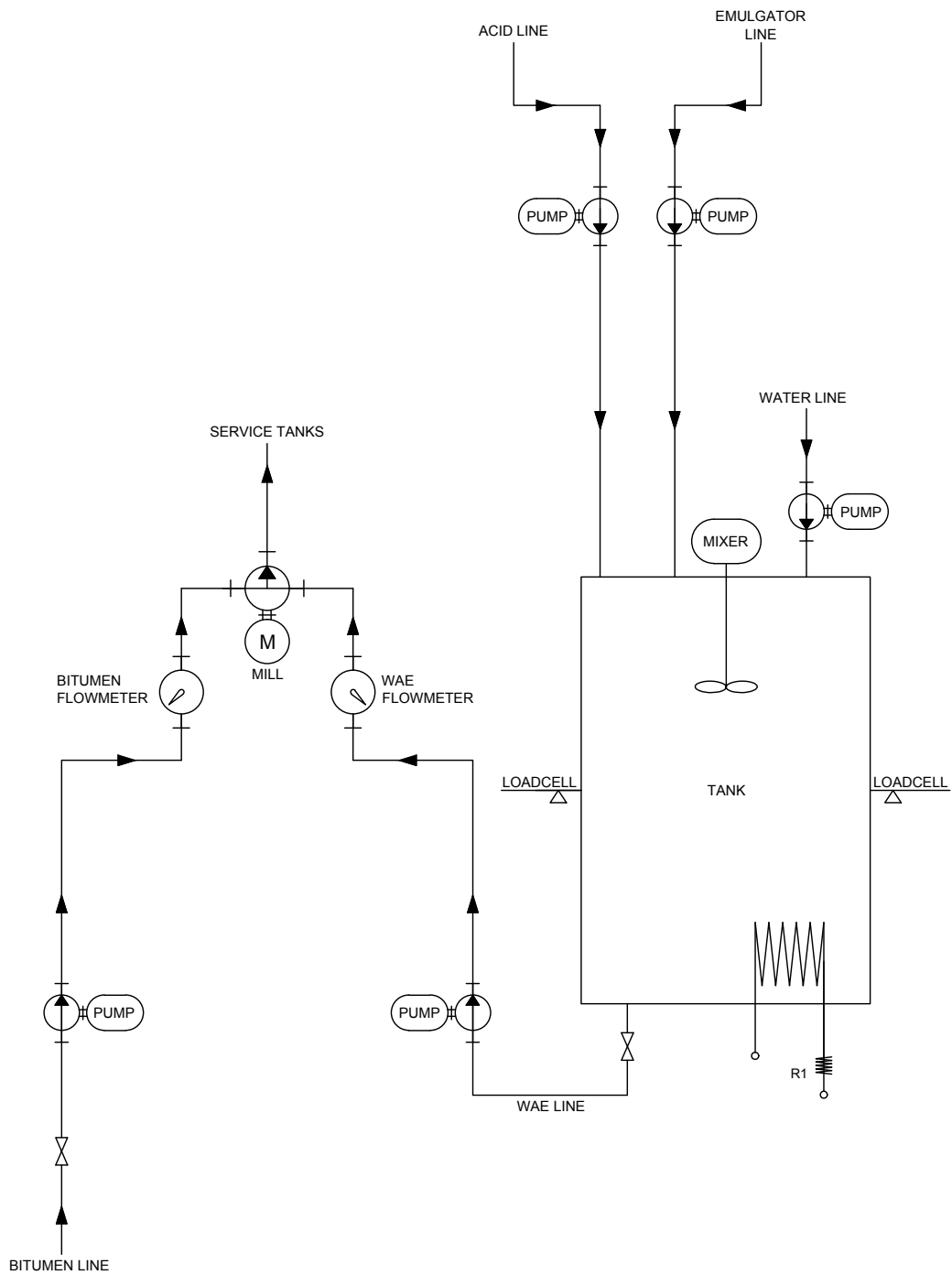
- Up to 4 t/h capacity
- Semi-automated control and reporting system by SCADA based software over PLC
- Colloidal mill
- Flexibility for different mix designs and recipes
- Easily transportable, suitable for container
- Hot water inlet



Bitumen flow meter.



Bitumen – WAE Mixing.



Technical data Emultec 4	Options
Stainless steel premix tank on load cells	Electrical or thermal oil heating
Heating lines for rapid water heating	Additional kerosene / and diesel feeding line
Stainless steel WAE pump and flow meter	
Bitumen flow meter with heated body	
Barrel pump for additional safety	

# Heattec

## Flexible thermal oil heating system

The Heattec system is the fastest solution to generate heat from bitumen tanks to asphalt plants. The intelligent system is the perfect solution for all customers who have easier access to different fuel types than electricity.

### Benefits at a glance

- From 200 000 kcal/h to 2 000 000 kcal/h capacity
- Double line, double pipe heating coil
- Suitable with burner for all fuel types
- Complete system with expansion tank and circulation pumps
- Dual high pressure switches for increased safety



### Technical data Heattec

Inner elements with heat resistance over 1000 °C

Flange connections suitable for any system

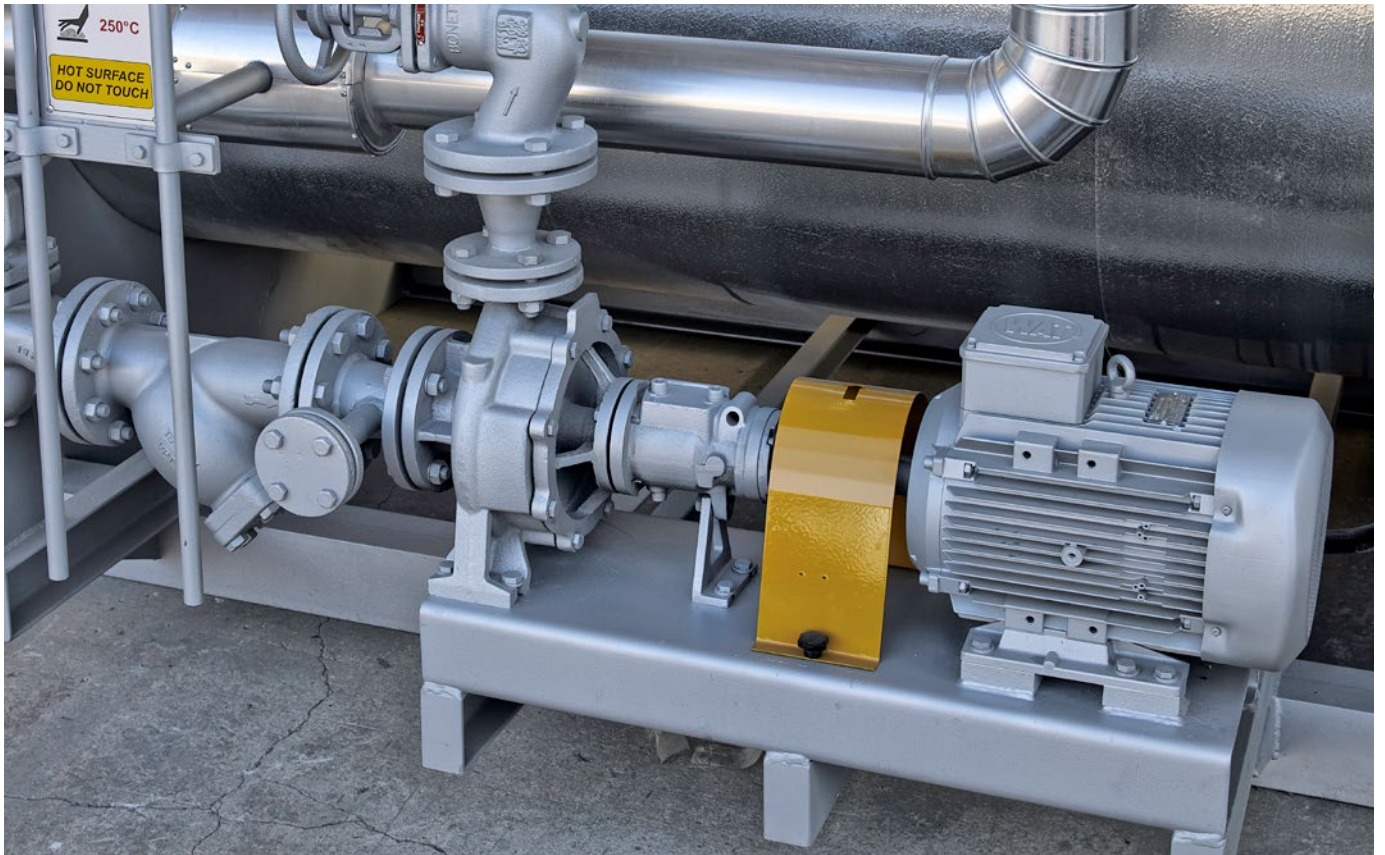
Continuous temperature control system for efficient fuel consumption

Seamless steel DIN 2448 heating coil

60 mm rock wool insulated body with aluminum cover

230 °C maximum operating temperature

“For customers who have easier access to different fuel types than electricity.”



Pump.



Safety system.

# Drumtec

## High efficient drum melting system

With two different capacity models, Drumtec offers high capacity drum melting technology for bitumen storage and continuous use. It is the perfect solution for customers who have easier access to bitumen supply in drums.

### Advantage

- Enabling diversity for bitumen supply
- Enabling to stock bitumen during low season

### Benefits at a glance

- Up to 10 t/h melting capacity
- Hydraulic barrel lifting mechanism
- Barrel chambers with dedicated thermic oil lines
- Bottom reservoir for bitumen storage
- Easy transportation, container size

#### Technical data Drumtec

Different models with 24 – 30 barrel capacity

12 tons bitumen storage with heating lines

60 mm rock wool insulation covers the entire body

50 m<sup>3</sup> bitumen discharge pump





Inner view.



Heating lines.



Drum loading.



Lifting mechanism.

**Australia:** Ammann Australia Pty. Ltd. | Narangba 4504

**Austria:** Ammann Austria GmbH | 4113 St. Martin im Mühlkreis

**Brazil:** Ammann do Brasil | CEP: 94180-452 Gravataí/RS

**Bulgaria:** Ammann Bulgaria | 1700 Sofia

**China:** Ammann Construction Machinery Shanghai Co. Ltd. | Shanghai 201700

**Czech Republic:** Ammann Czech Republic a.s. | 54901 Nové Město nad Metují

Ammann Asphalt GmbH | 60200 Brno

**France:** Ammann France SAS | 94046 Créteil/Cedex

**Germany:** Ammann Asphalt GmbH | 31061 Alfeld (Leine)

Ammann Verdichtung GmbH | 53773 Hennef

Ammann Elba Beton GmbH | 76275 Ettlingen

**India:** Ammann Apollo India Private Ltd. | Ahmedabad 380 009

**Indonesia:** Ammann South East Asia | Jakarta 11530

**Italy:** Ammann Italy S.p.A. | 37012 Bussolengo

**Kazakhstan:** Ammann Kazakhstan LLP | Almaty 050051

**Netherlands:** Ammann Benelux B.V. | 7730 SK Ommen

**Poland:** Ammann Polska sp.z.o.o. | 02-230 Warszawa

**Romania:** Ammann Group Romania S.R.L. | 077125 Magurele

**Russia:** Ammann Russia o.o.o. | 127 473 Moscow

**Singapore:** Ammann Singapore Pte. Ltd. | 307591 Singapore

**Spain:** Ammann Iberia S L | Madrid

**South Africa:** Ammann Construction Machinery South Africa | Benoni 1500

**Sweden:** Ammann Scandinavia | 211 20 Malmö

**Switzerland:** Ammann Switzerland Ltd. | 4901 Langenthal

Avesco AG | 4901 Langenthal

**Turkey:** Ammann Teknomak A.S. | Ankara 06370

**Ukraine:** OOO Ammann Ukraine | 03150 Kiev

**United Arab Emirates:** Ammann NME FZE | Dubai

**United Kingdom:** Ammann UK Ltd. | Warwickshire CV37 0TY

**USA:** Ammann America Inc. | Ponte Vedra | Florida 32082

Detailed information can be found at: [www.ammann-group.com](http://www.ammann-group.com)